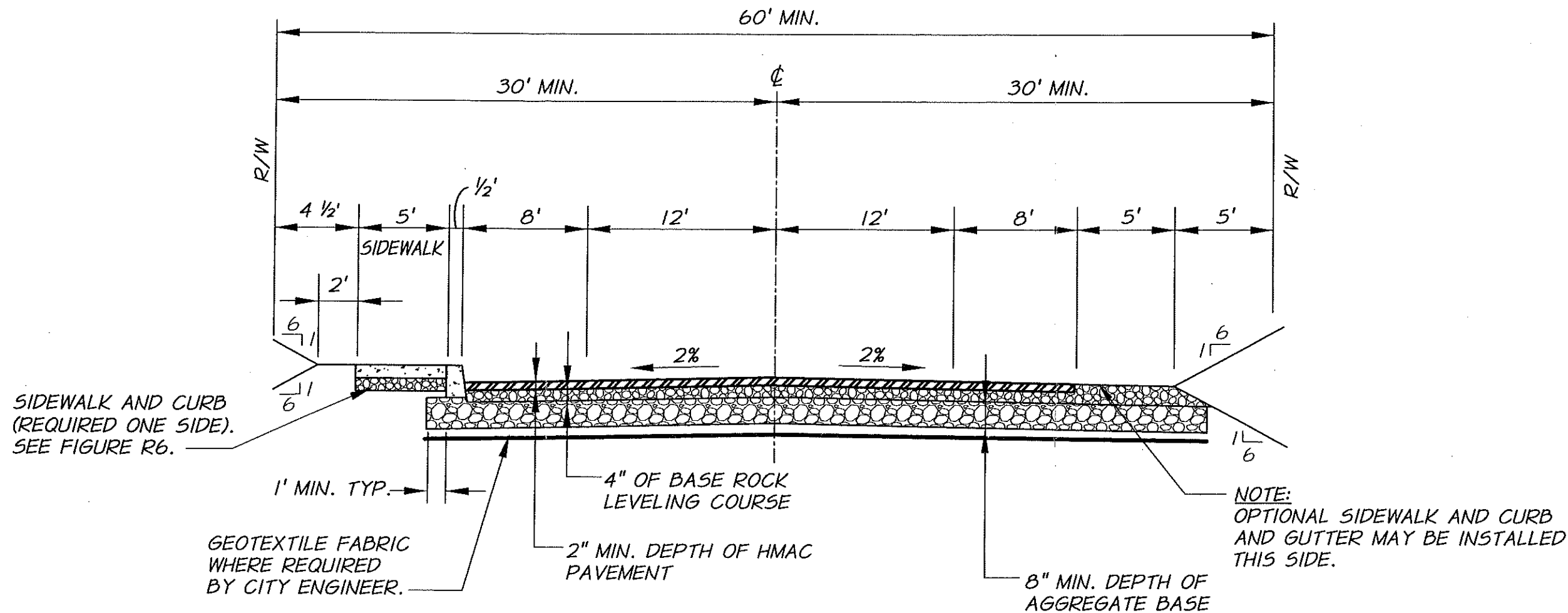


TYPICAL SECTION
LOCAL STREET
 N.T.S.

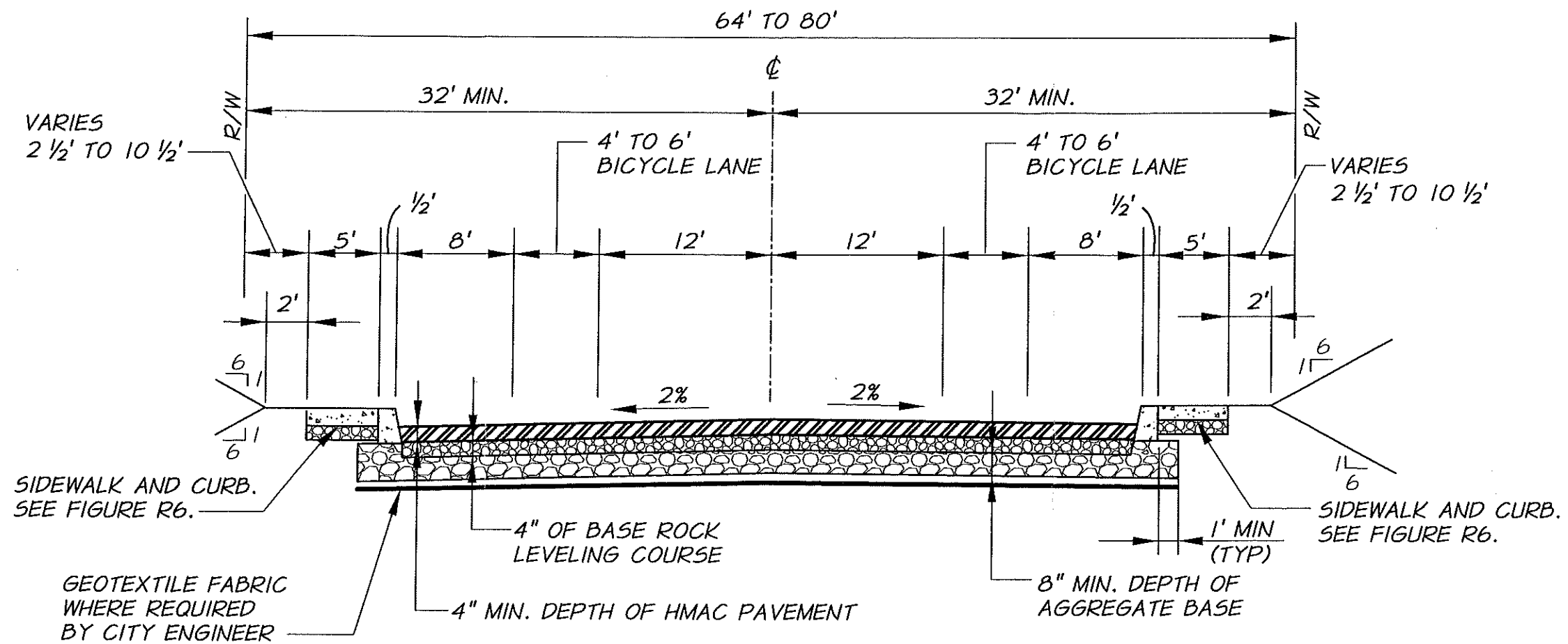
| REVISION | DATE | CITY OF COVE OREGON | STANDARD STREET DETAILS TYPICAL SECTION LOCAL STREET | FIGURE R1 |
|----------------------|------------|---------------------------|--|---------------------|
| ORIGINAL DEVELOPMENT | APRIL 2011 | | | |
| | | | | |
| | | | | |



TYPICAL SECTION
MINOR COLLECTOR STREET

N.T.S.

| | | | | |
|----------------------|------------|------------------------------------|--|----------------------|
| REVISION | DATE | CITY OF COVE OREGON | STANDARD STREET DETAILS TYPICAL SECTION MINOR COLLECTOR STREET | FIGURE R2 |
| ORIGINAL DEVELOPMENT | APRIL 2011 | | | |
| | | | | |



TYPICAL SECTION
ARTERIAL STREET

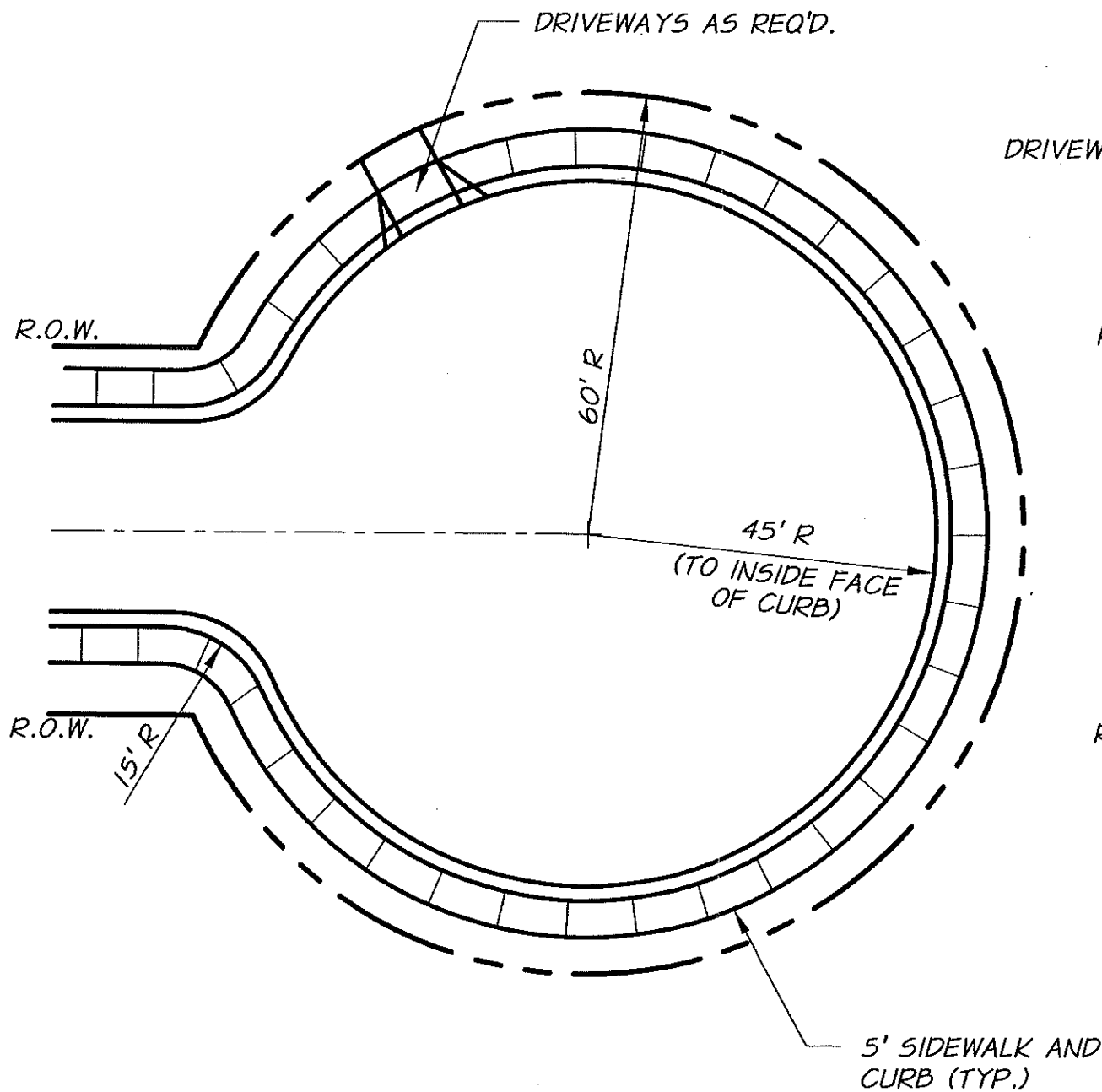
N.T.S.

| REVISION | DATE |
|----------------------|------------|
| ORIGINAL DEVELOPMENT | APRIL 2011 |
| | |
| | |

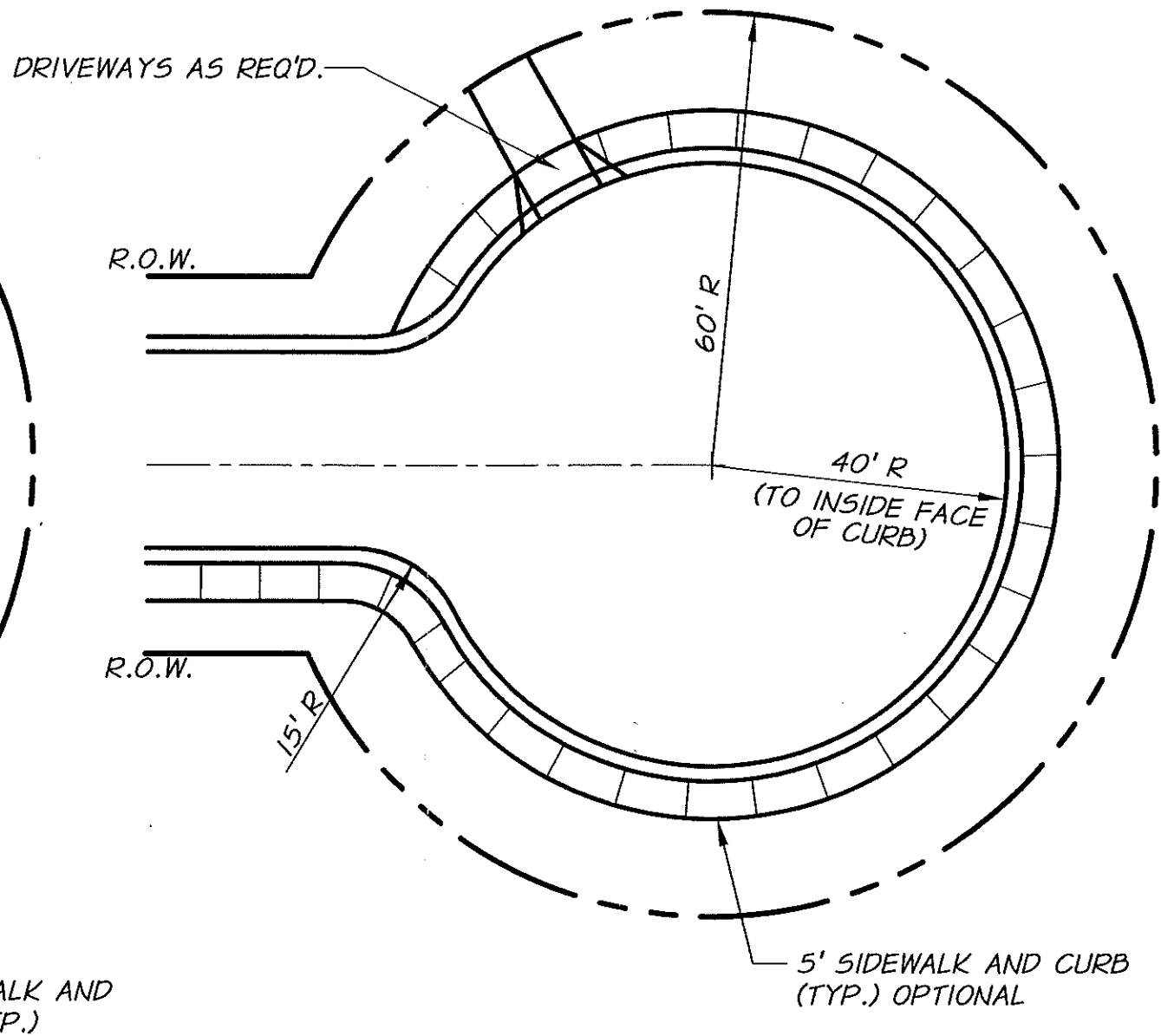
**CITY OF
COVE
OREGON**

STANDARD STREET DETAILS
TYPICAL SECTION
ARTERIAL STREET

FIGURE
R3



TYPICAL CUL-DE-SAC
 BUSINESS AND INDUSTRIAL
 N.T.S.



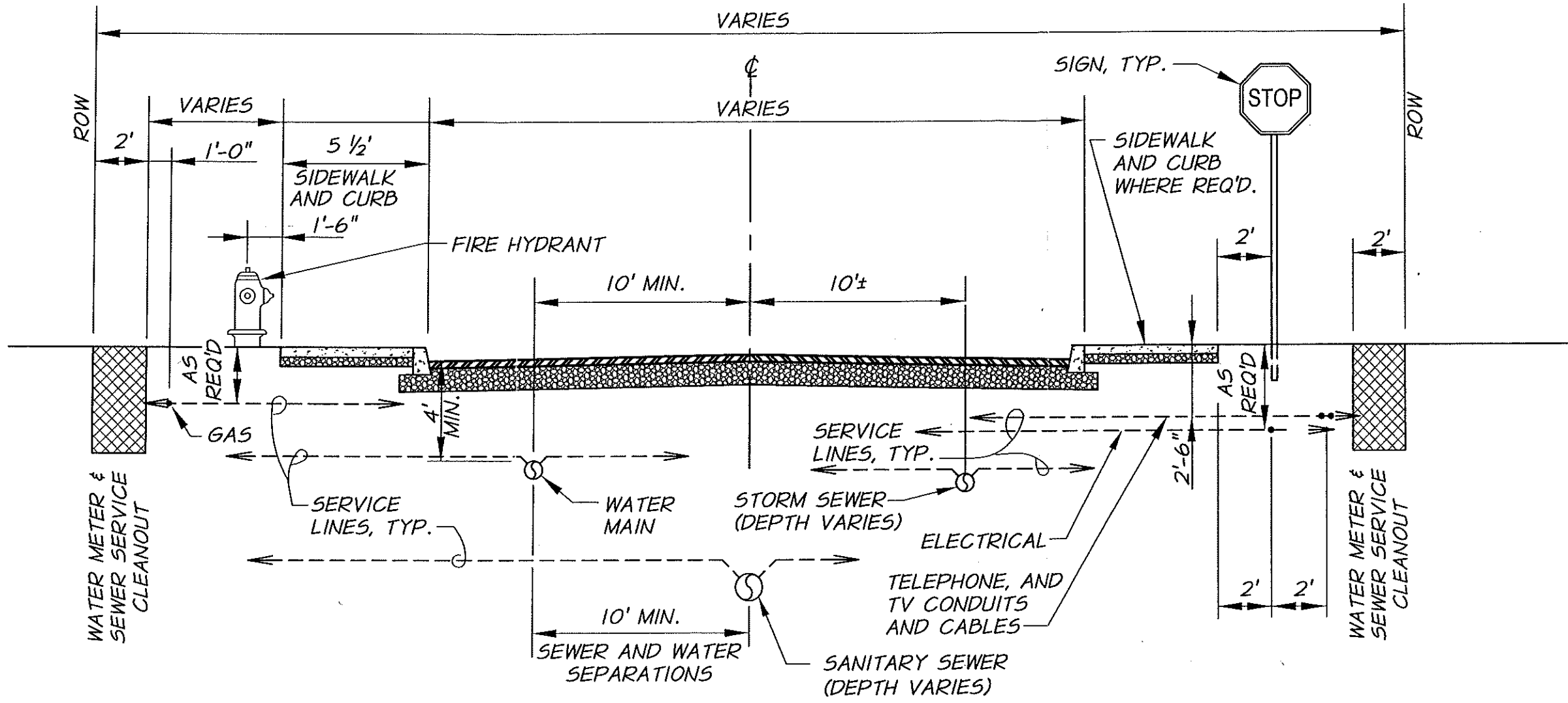
TYPICAL CUL-DE-SAC
 LOCAL STREET
 N.T.S.

| REVISION | DATE |
|----------------------|------------|
| ORIGINAL DEVELOPMENT | APRIL 2011 |
| | |
| | |

**CITY OF
 COVE
 OREGON**

STANDARD STREET DETAILS
 TYPICAL CUL-DE-SAC

FIGURE
R4



NOTE:
 UTILITY AND SERVICE LINE LOCATIONS
 ARE SHOWN CONCEPTUALLY. FIELD
 CONDITIONS MAY REQUIRE MODIFICATIONS
 TO BOTH HORIZONTAL AND VERTICAL
 LOCATIONS AS APPROVED BY UTILITY
 COMPANIES AND CITY ENGINEER.

TYPICAL SECTION
UTILITY LOCATIONS
 N.T.S.

| REVISION | DATE |
|----------------------|------------|
| ORIGINAL DEVELOPMENT | APRIL 2011 |
| | |
| | |

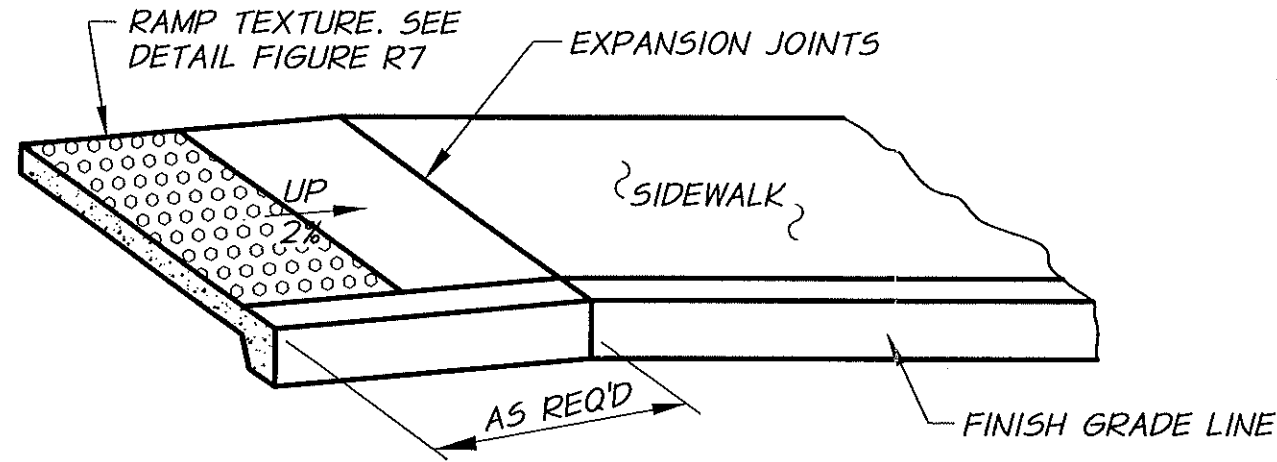
CITY OF
 COVE
 OREGON

STANDARD STREET DETAILS
 UTILITY LOCATIONS

FIGURE
R5

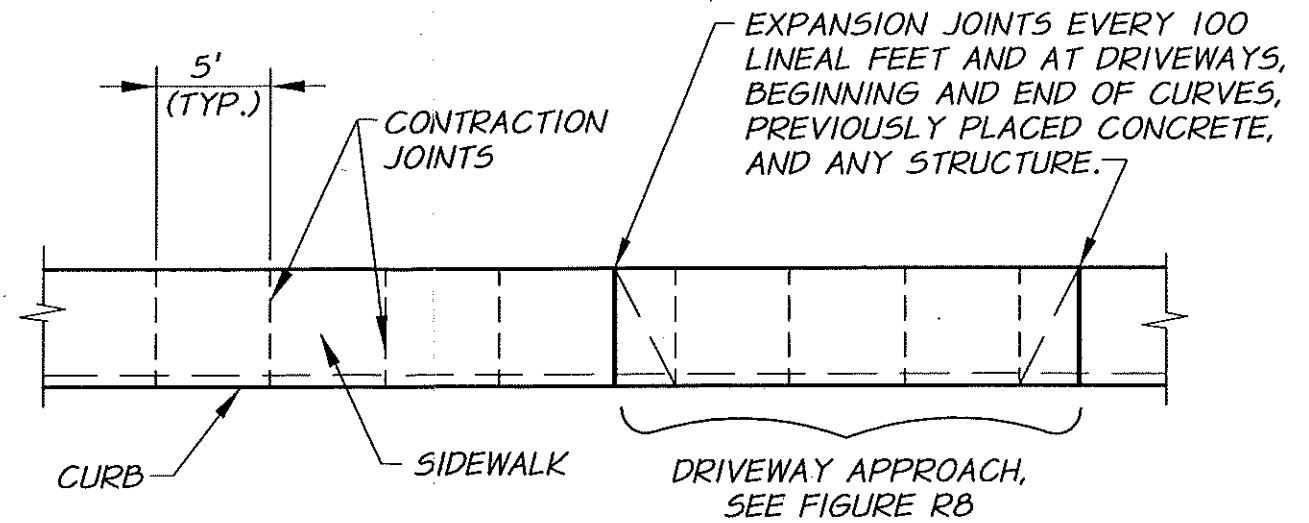
RAMP NOTES:

1. ALL SIDEWALK EDGES SHALL HAVE 1/4" RADIUS.
2. RAMP SHALL BE PLACED AT THE START AND END OF ALL SIDEWALKS UNLESS OTHERWISE NOTED.



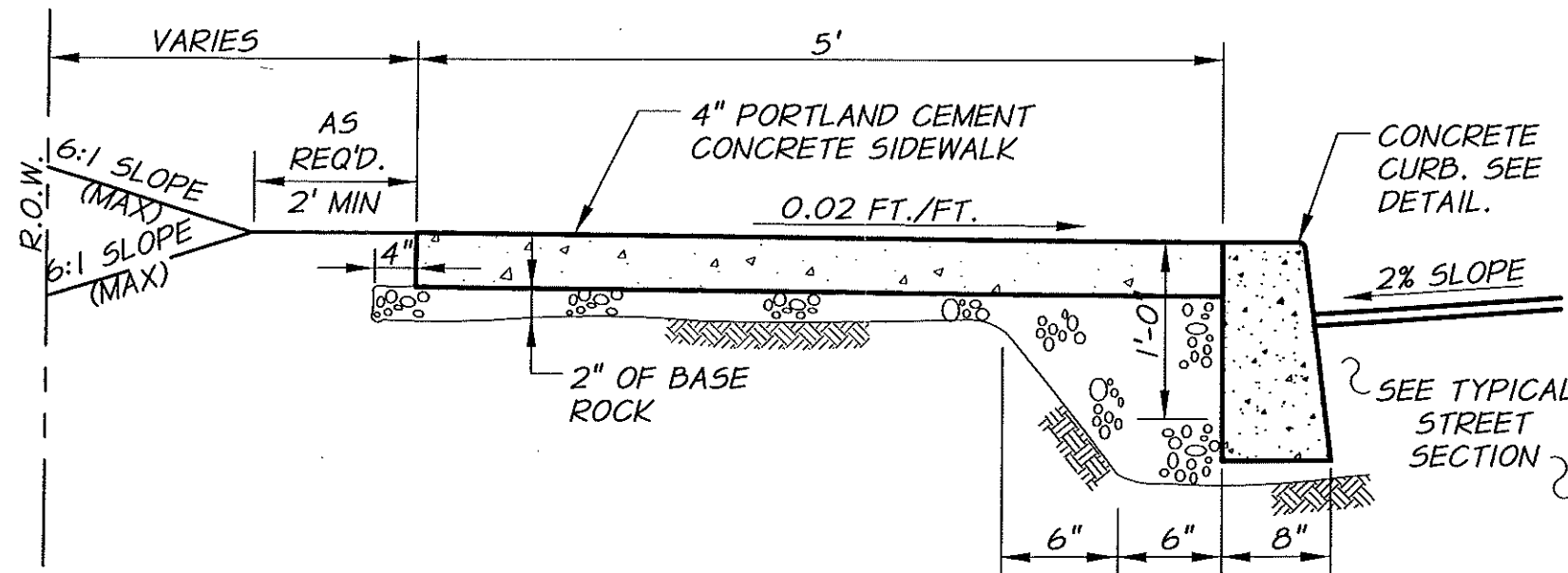
END OF SIDEWALK RAMP DETAIL

N.T.S.



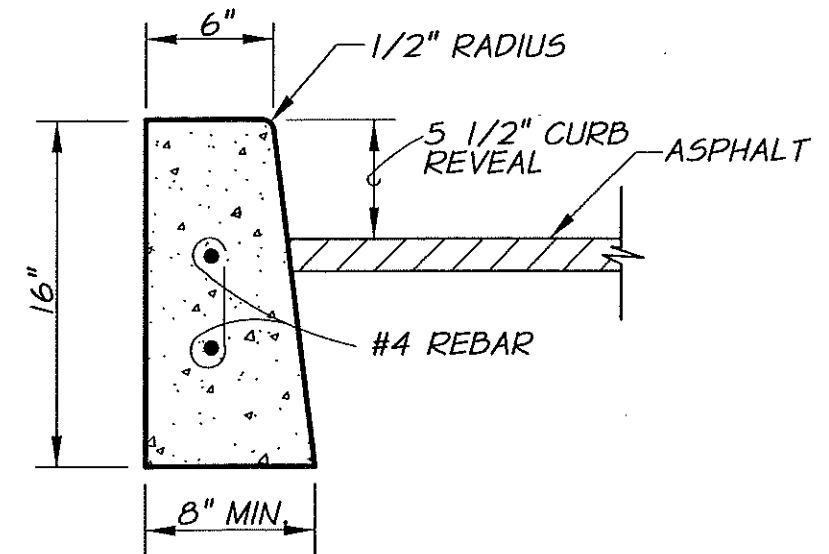
SIDEWALK JOINTING DETAIL

N.T.S.



SIDEWALK AND CURB DETAIL

N.T.S.



TYPICAL CURB DETAIL

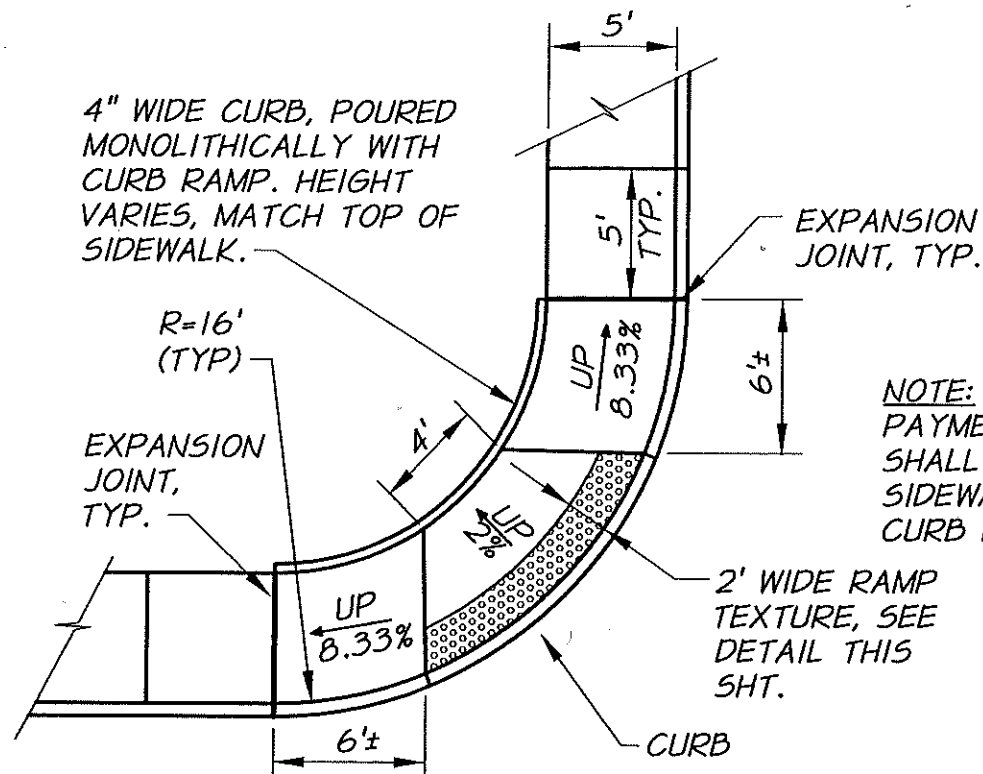
N.T.S.

| REVISION | DATE |
|----------------------|------------|
| ORIGINAL DEVELOPMENT | APRIL 2011 |
| | |
| | |

CITY OF
COVE
OREGON

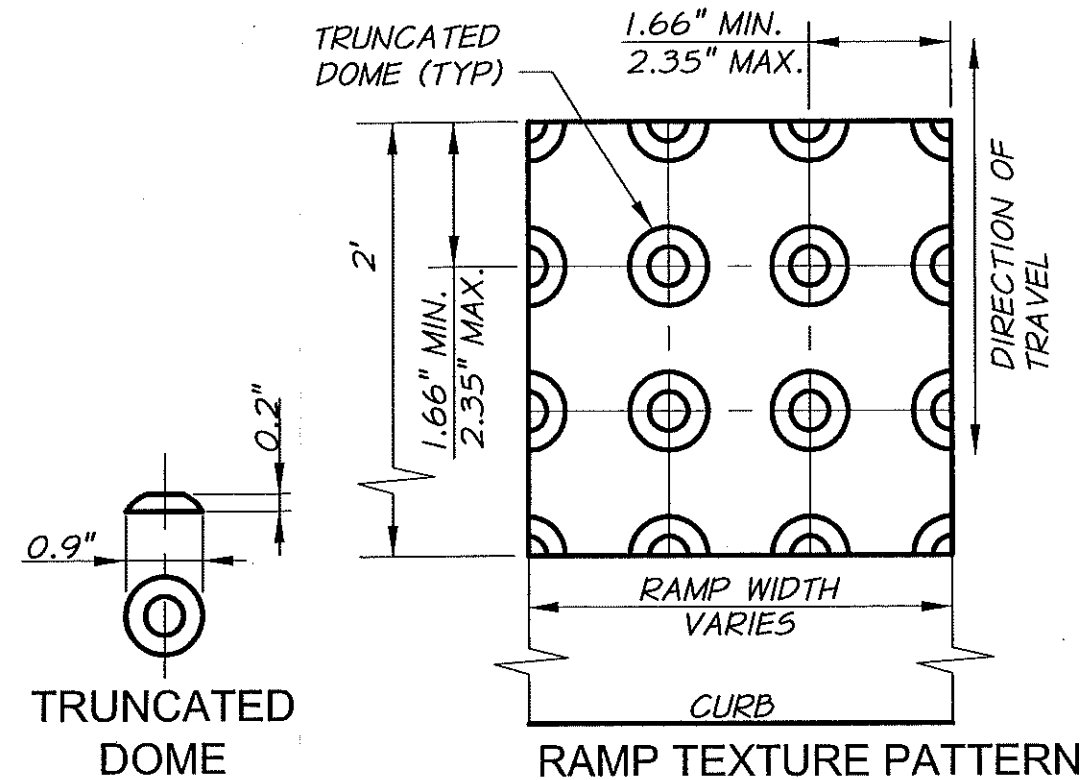
STANDARD STREET DETAILS
SIDEWALK AND CURB DETAILS

FIGURE
R6



CURB RAMP PLACEMENT DETAIL

N.T.S.

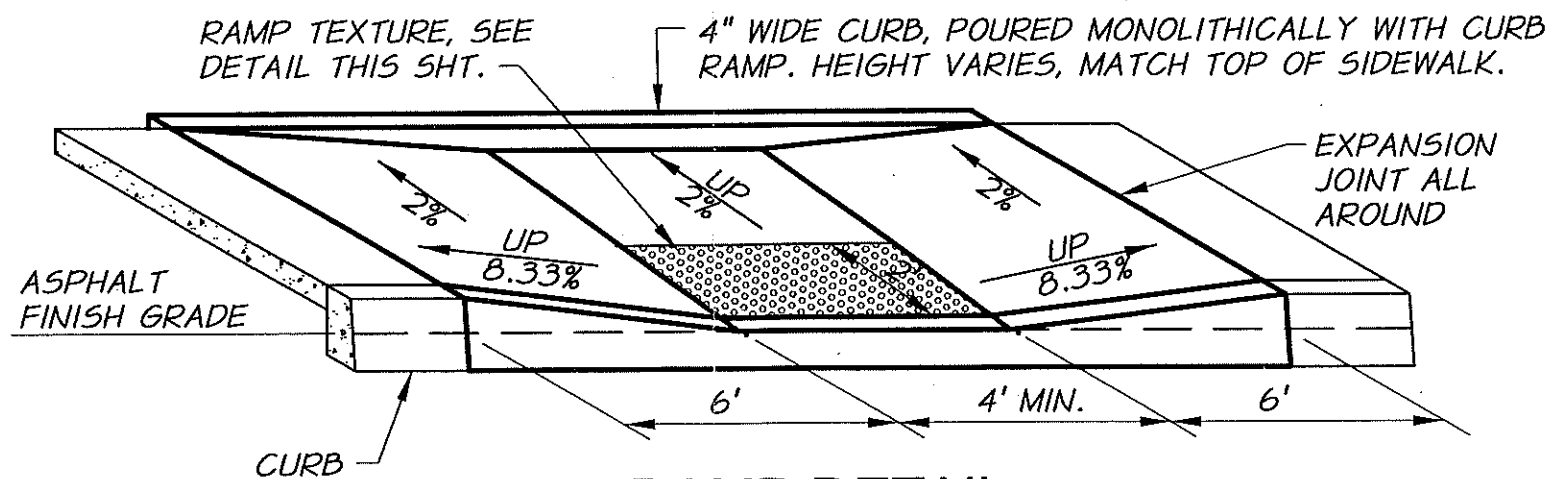


RAMP TEXTURE PATTERN DETAILS

N.T.S.

CURB RAMP NOTES:

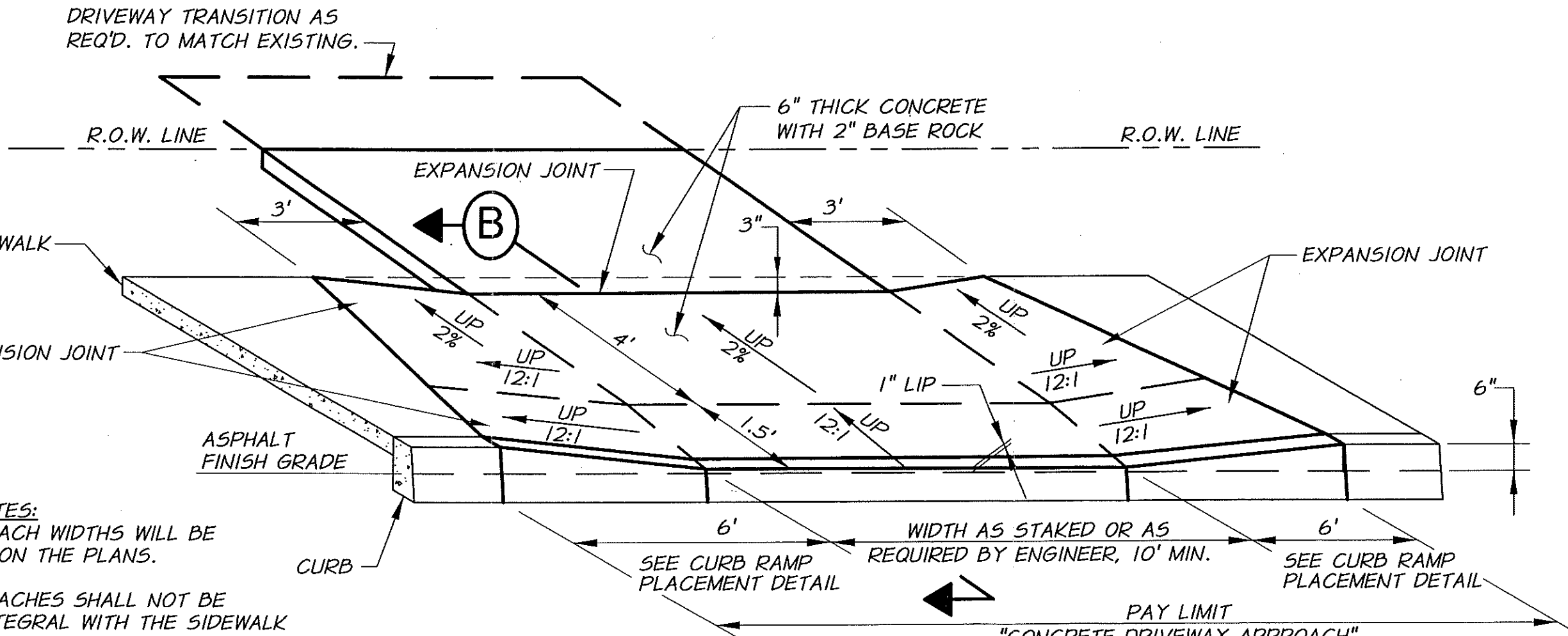
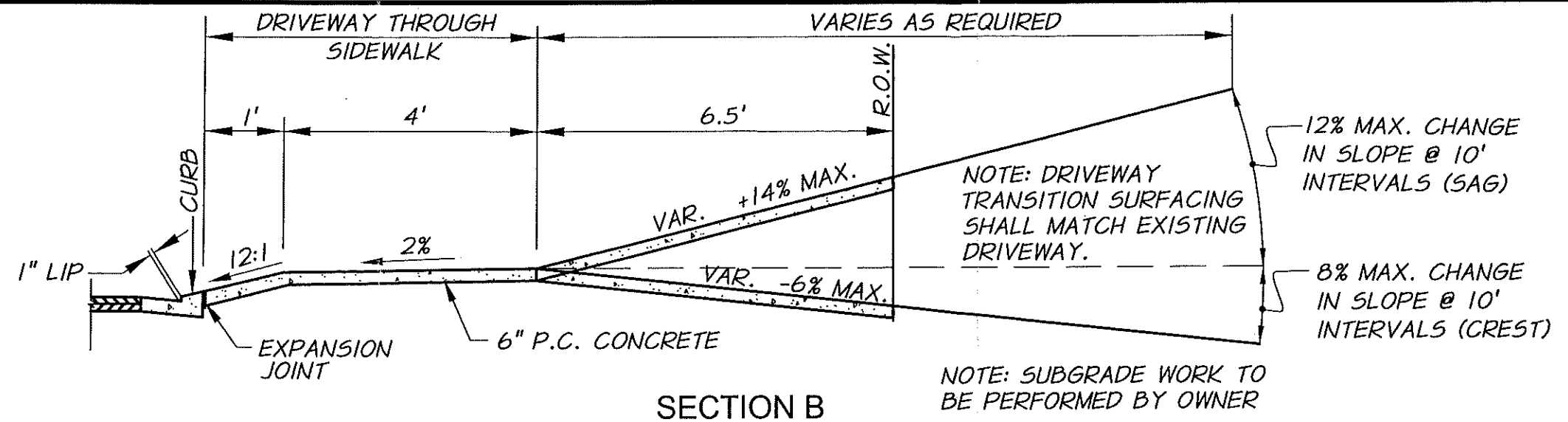
1. THE SIDEWALK WIDTH WILL BE AS SPECIFIED ON FIGURES R1, R2, AND R3.
2. THE CURB RAMP SHALL NOT BE PLACED INTEGRAL WITH THE SIDEWALK OR CURB AND SHALL BE ISOLATED WITH EXPANSION JOINT MATERIAL.
3. ALL SIDEWALK EDGES SHALL HAVE A 1/4" RADIUS.
4. CURB RAMP TEXTURING SHALL BE TRUNCATED DOME WARNING TEXTURE ONLY. IT SHALL ONLY BE PLACED IN THE LOWER 2' OF THROAT OF RAMP. ALIGN PATTERN RELATIVE TO TRAVEL DIRECTION ONLY AS SHOWN IN DETAIL. COLOR OF TEXTURE TO BE SAFETY YELLOW. TRUNCATED DOMES SHALL BE ARMORCAST CAST IN PLACE DETECTABLE WARNING PANELS OR APPROVED EQUAL.
5. CURB RAMP ARE PAID FOR AS PART OF THE SIDEWALK BID ITEM AT THE SIDEWALK BID ITEM UNIT PRICE. NO ADDITIONAL PAYMENT WILL BE MADE FOR CURB RAMP.



CURB RAMP DETAIL

N.T.S.

| | | | | |
|----------------------|------------|---------------------------|---|---------------------|
| REVISION | DATE | CITY OF COVE OREGON | STANDARD STREET DETAILS CURB RAMP DETAIL | FIGURE R7 |
| ORIGINAL DEVELOPMENT | APRIL 2011 | | | |
| | | | | |

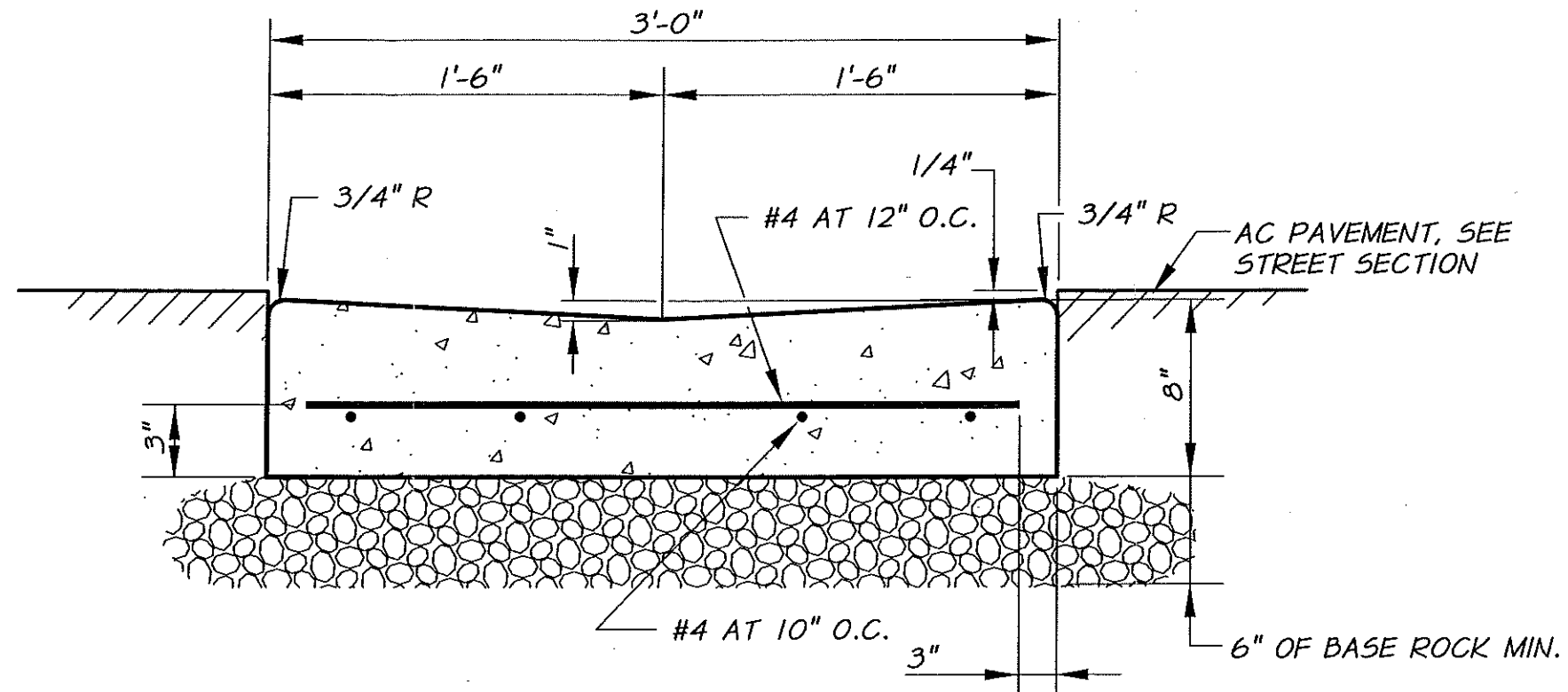


APPROACH NOTES:

1. THE APPROACH WIDTHS WILL BE SPECIFIED ON THE PLANS.
2. THE APPROACHES SHALL NOT BE PLACED INTEGRAL WITH THE SIDEWALK OR CURB AND SHALL BE ISOLATED WITH EXPANSION JOINT MATERIAL.
3. ALL APPROACH EDGES SHALL HAVE A 1/4" RADIUS.
4. IF SIDEWALK IS NOT PROVIDED ADJACENT TO CURB, ALTERNATIVE APPROACH CONCEPT MAY BE SUBMITTED TO THE CITY FOR APPROVAL.

TYPICAL DRIVEWAY APPROACH
N.T.S.

| | | | | |
|----------------------|------------|---------------------------|---|---------------------|
| REVISION | DATE | CITY OF COVE OREGON | STANDARD STREET DETAILS DRIVEWAY APPROACH DETAIL | FIGURE R8 |
| ORIGINAL DEVELOPMENT | APRIL 2011 | | | |
| | | | | |



CONCRETE VALLEY GUTTER SECTION

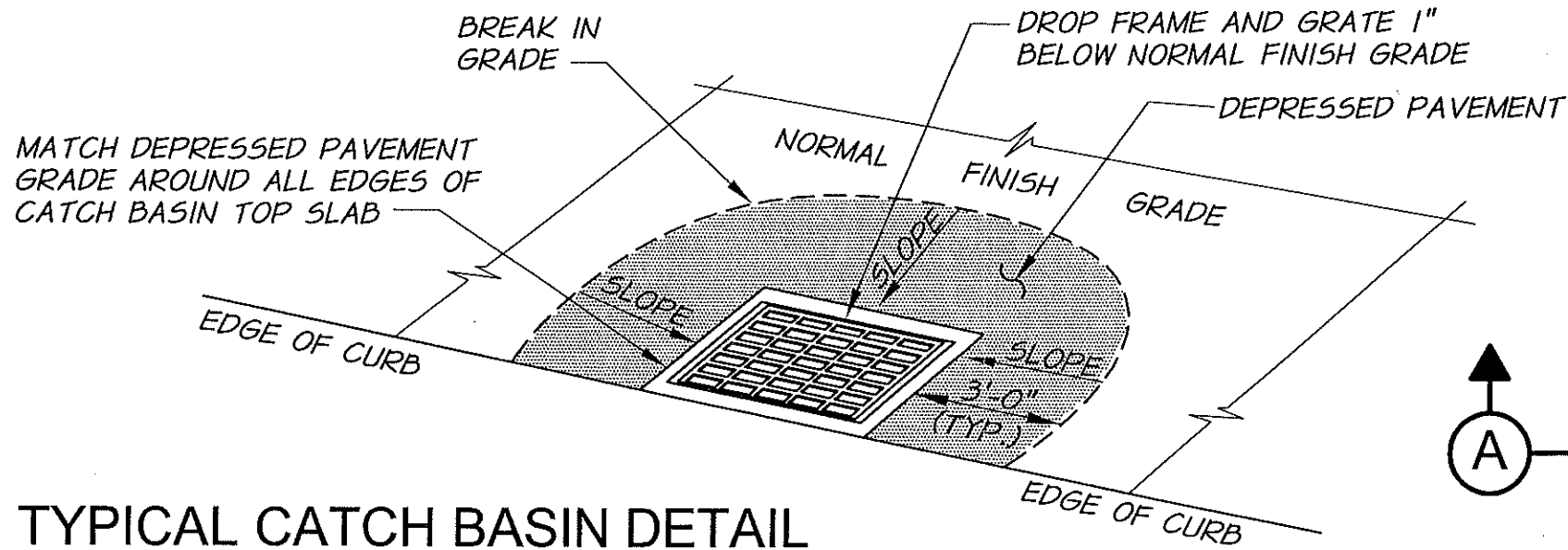
N.T.S.

| REVISION | DATE |
|----------------------|------------|
| ORIGINAL DEVELOPMENT | MARCH 2007 |
| | |
| | |

CITY OF
CONDON
OREGON

STANDARD STREET DETAILS
CONCRETE VALLEY GUTTER SECTION

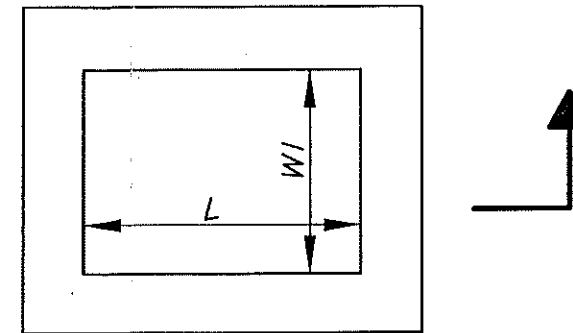
FIGURE
R9



| INLET TYPE | L | W | 1 |
|------------|-----------|-----------|---|
| G-1 | 2'-4-1/4" | 1'-8-7/8" | |
| G-2 | 2'-4-1/4" | 2'-3-3/8" | |

TYPICAL CATCH BASIN DETAIL

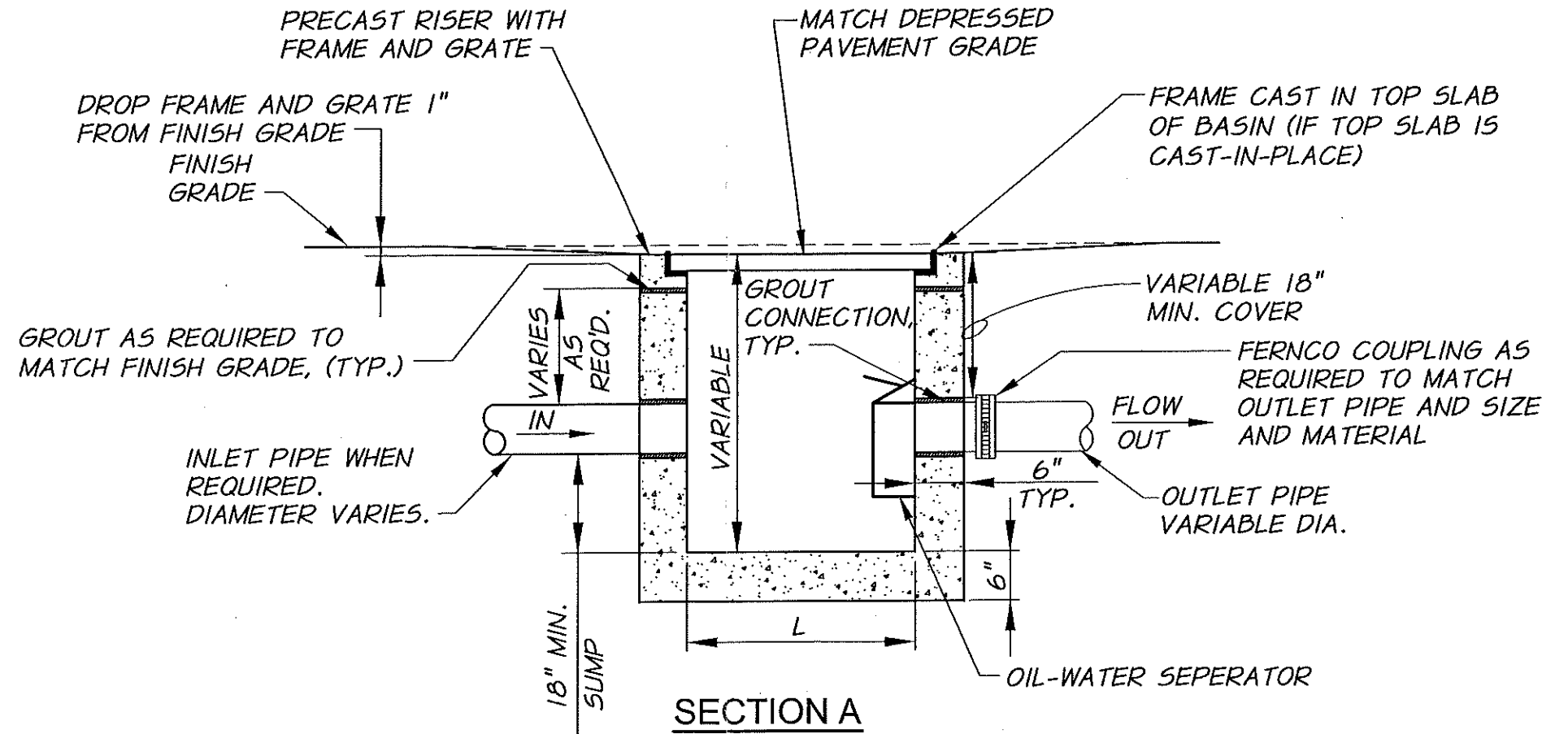
N.T.S.



TOP VIEW

NOTES:

1. CATCH BASIN TO BE CONSTRUCTED IN ACCORDANCE WITH ASTM C-139 AND C-913 (PRE-CAST).
2. CONCRETE STRENGTH SHALL BE 3000 PSI.
3. 6" OF 3/4" COMPACTED BASE MATERIAL TO BE PLACED AROUND STRUCTURE.
4. REINFORCEMENT IN PRE-CAST CATCH BASIN TO BE REBAR MEETING ASTM A615 GRADE 60 OR WELDED WIRE MEETING ASTM A497.
5. PRE-CAST CATCH BASINS SHALL BE PER OREGON STANDARD SPECIFICATIONS FOR CONSTRUCTION, TYPE G-1 OR G-2, AS APPROVED BY THE CITY,
6. FRAMES AND GRATES PER OREGON STANDARD SPECIFICATIONS FOR CONSTRUCTION, AS APPROVED BY THE CITY.
7. FIELD SET CATCH BASIN TO OBTAIN PROPER GRATE SLOPE TO MATCH FINISH GRADE.
8. "FLOW THROUGH CATCH BASINS" SHALL NOT HAVE OIL-WATER SEPERATOR BUT SHALL RETAIN ALL OTHER PROVISIONS OF THIS DETAIL.
9. REINFORCEMENT SHALL NOT BE REQUIRED FOR CAST-IN-PLACE CATCH BASINS.



SECTION A

| REVISION | DATE |
|----------------------|------------|
| ORIGINAL DEVELOPMENT | APRIL 2011 |
| | |
| | |

CITY OF
COVE
OREGON

STANDARD STREET DETAILS
TYPICAL CATCH BASIN DETAIL

FIGURE
R10

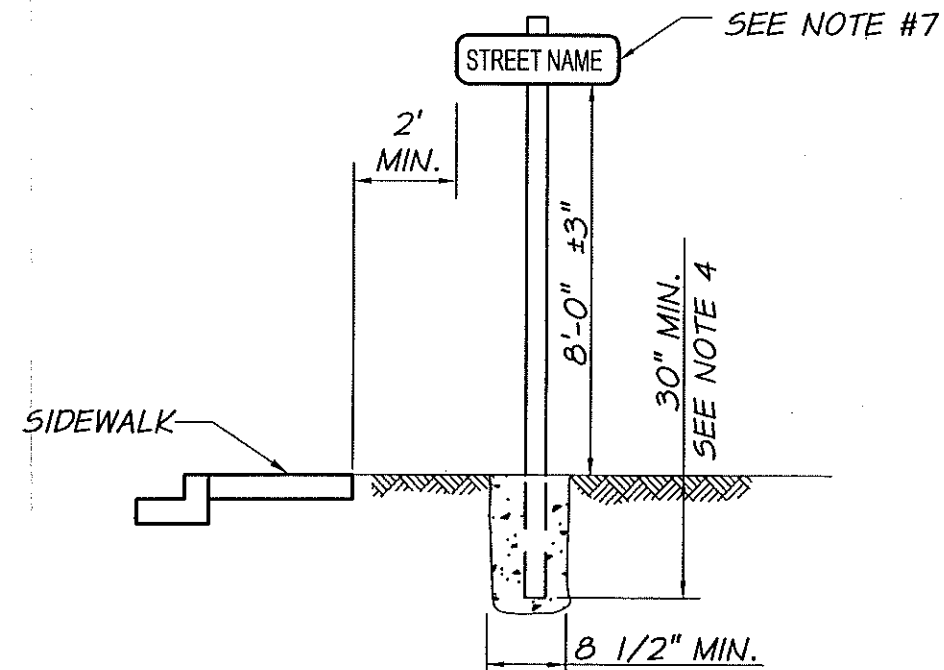


ARROWS ON SIGN
AS REQ'D. FOR
SIGN LOCATION

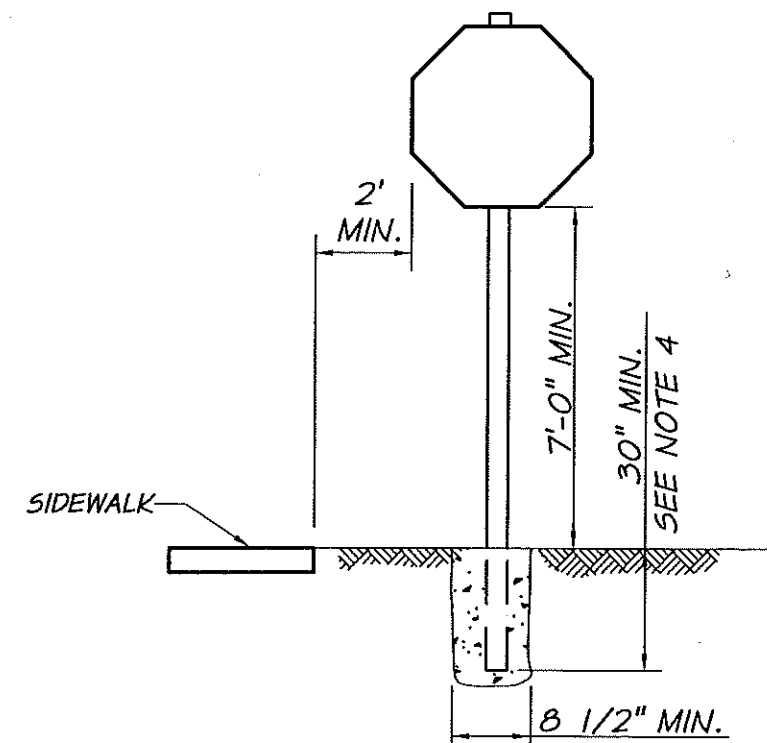


TRAFFIC SIGN INSTALLATION NOTES

1. ALL SIGNS SHALL CONFORM TO THE MANUAL ON UNIFORM TRAFFIC CONTROL DEVICES FOR STREETS AND HIGHWAYS, CURRENT ADDITION AND CURRENT MODIFICATIONS. STREET SIGNS SHALL BE THE MANUFACTURER AND STYLE AS DESIGNED BY THE CITY.
2. SIGNS SHALL BE MOUNTED WITH 2 - 5/16" DIA. GALV. BOLTS, NUTS & LOCK WASHERS, TO A U-CHANNEL OR SQUARE TUBE POST.
3. THE POST SHALL BE A 12' LONG METAL U-CHANNEL WEIGHING A MINIMUM 3 LBS/FT. OR A 12' LONG, 2" X 2" METAL SQUARE TUBE WITH 0.105 INCH WALL THICKNESS WITH A GREEN BAKED ENAMEL FINISH OR HOT-DIPPED GALVANIZED.
4. FOR POSTS WITH 30" TO 36" OF BURY DEPTH, BACKFILL WITH 3000 P.S.I. CONCRETE. NATIVE MATERIAL COMPACTED TO A MINIMUM OF 90% OF TEST METHOD 609 SHALL BE USED FOR DEPTHS OVER 36". ALTERNATE YEILDING BREAKAWAY ANCHOR AND V-LOCK SOCKET ASSEMBLIES MAY BE SUBMITTED FOR APPROVAL BY THE CITY ENGINEER.
5. SIGNS AND POST SHALL BE INSTALLED SO THEY ARE PLUMB, RESIST SWAYING IN THE WIND AND DISPLACEMENT BY VANDALISM.
6. SIGN POSTS SHALL BE SET AT THE LOCATIONS CALLED OUT ON THE PLANS, UNLESS OTHERWISE REQUIRED. IF SIDEWALK IS NOT PRESENT, POSTS SHALL BE 2'-6" FROM BACK OF CURB OR EDGE OF PAVEMENT, UNLESS OTHERWISE REQUIRED.
7. ORIENT STREET SIGNS TO DISPLAY STREET NAMES AND ADJUST TO FIELD CONDITIONS.
8. "NO PARKING" SIGNS SHALL BE SET AT AN ANGLE NOT LESS THAN 30° NOR MORE THAN 45° WITH THE LINE OF TRAFFIC FLOW TO BE VISIBLE TO APPROACHING TRAFFIC.



STREET SIGN DETAIL



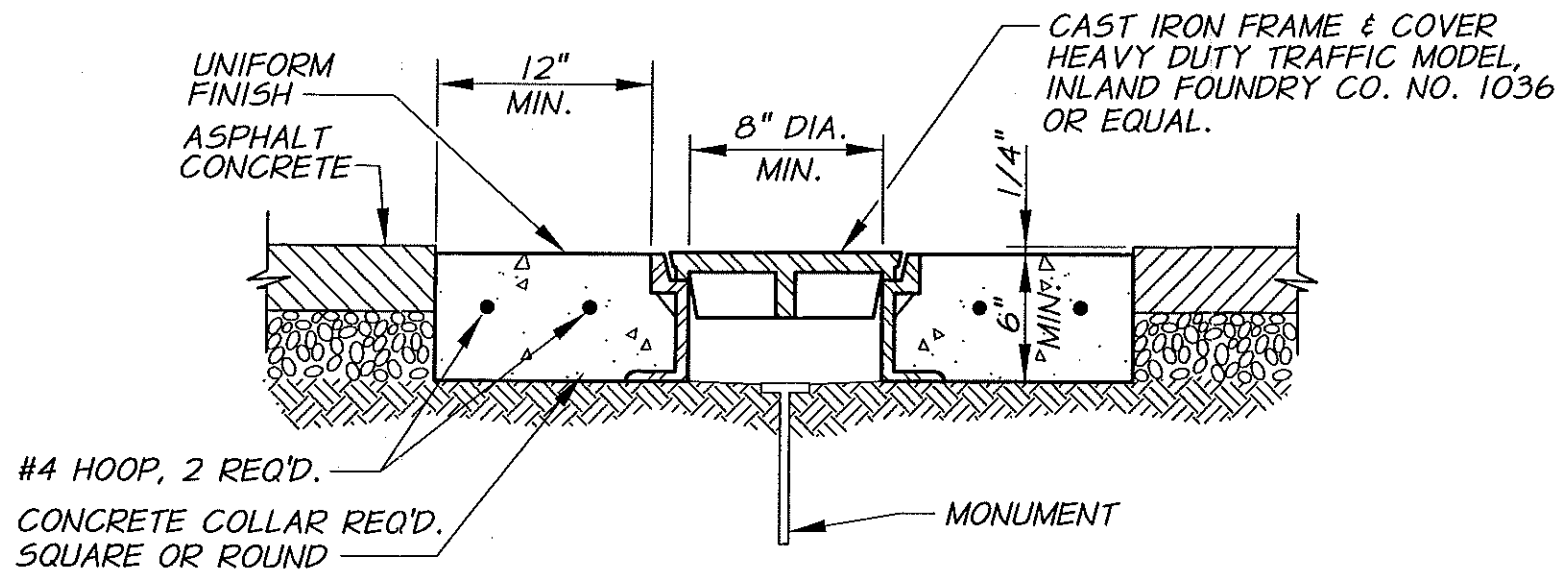
TRAFFIC SIGN DETAIL

| REVISION | DATE |
|----------------------|------------|
| ORIGINAL DEVELOPMENT | APRIL 2011 |
| | |
| | |

CITY OF
COVE
OREGON

STANDARD STREET DETAILS
SIGN DETAILS

FIGURE
R11



REQUIREMENTS FOR CONCRETE COLLARS:

1. CONCRETE: 3/4", 7 SACK, 4000 PSI AT 28 DAYS, 2" TO 4" SLUMP, 4-7% AIR.
2. COLLAR TO BE FORMED AND UNIFORMLY ROUND OR SQUARE.
3. SMOOTH BROOMED FINISH REQUIRED.
4. APPLY CONCRETE CURING COMPOUND.
5. PROTECT FROM TRAFFIC FOR 4 DAYS MIN.

MONUMENT BOX DETAIL

N.T.S.

| REVISION | DATE |
|----------------------|------------|
| ORIGINAL DEVELOPMENT | APRIL 2011 |
| | |
| | |

CITY OF
COVE
OREGON

STANDARD STREET DETAILS
MONUMENT BOX DETAIL

FIGURE
R12